

## MATH GAMES AT HOME

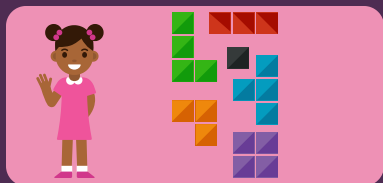
# Kinder - 2 Math Games and Activities for School and At Home *Available From March 4 - August 30*



**FEATURING  
JANE  
FELLING**

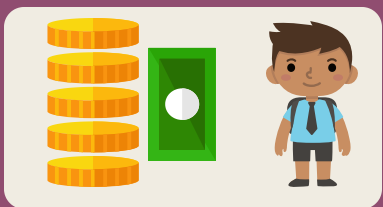
**5 One-hour  
Recorded  
Sessions**

Concerned about learning loss? Struggling to find hands-on activities to share with students and parents to keep math skills? Trying to find fun games and activities to stimulate deeper math comprehension?  
**LOOK NO FURTHER!**



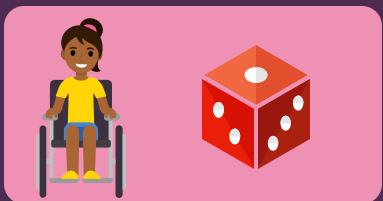
### **Session 1 - Hands On Games & Activities in a Hands Off World K-2**

Now more than ever we need kids to be engaged in meaningful hands-on games and activities with manipulatives that intrigue and capture their attention. This very basic workshop will help you rebuild Kindergarten concepts that lay the foundation for First and Second grade operational fluency.



### **Session 2 - ADDITION & SUBTRACTION MATH GAMES - BACK TO THE BASICS - FIRST & SECOND GRADE STUDENTS**

After a year of covid many students have not fully mastered basic addition and subtraction and need daily practice with manipulatives, not just paper and pencil practice. You will learn how to use simple cards and dice, socially distancing the games to teach and rebuild the operational concepts for these grade levels.



### **Session 3 - MATH GAMES FOR MULTI-DIGIT ADDITION & SUBTRACTION - FIRST & SECOND GRADE STUDENTS**

With on-line learning many students have not fully mastered two and three-digit addition and subtraction and need daily practice with manipulatives, not just paper and pencil practice. In this workshop games & strategies using cards and regular dice will be taught to assist you in bringing students back to current grade level math learning.



### **Session 4 - GAMES & ACTIVITIES FOR REBUILDING PRIMARY PLACE VALUE CONCEPTS: K – SECOND GRADE STUDENTS**

Now more than ever we need kids to be engaged in meaningful hands-on games and activities with manipulatives that intrigue and capture their attention. In this workshop games and strategies using cards and regular dice will be taught for working on bringing student math learning back to grade level.



### **Session 5 - SOLITAIRE & SUMMER TIME GAMES FOR YOUR KINDERGARTEN – SECOND GRADE STUDENTS**

This workshop will contain some repeats from all of the primary modules – they are the student favorites and games that families can hopefully find time and the materials to do over the summer. Games will incorporate the use of cards and regular dice.

**5 PD hours  
Available**

Need more information? Contact Ryan Nevius at IL ASCD  
618-203-3993 or rcneviu@me.com  
Illinois ASCD is CPS Approved Provider # 24595  
[www.ILASCD.org](http://www.ILASCD.org)

**[Click here for  
Detailed info on  
Sessions & Jane](#)**



## Kinder – 2 Math Games and Activities for School and At Home Presented by Jane Felling

Asynchronous recorded sessions – watch when you want!

Five Professional Development Hours

Organization/School \_\_\_\_\_

Address: \_\_\_\_\_ City: \_\_\_\_\_

State: \_\_\_\_\_ Zip: \_\_\_\_\_ Phone: \_\_\_\_\_ Fax: \_\_\_\_\_

Name/Position: \_\_\_\_\_

Email: \_\_\_\_\_

IL ASCD Membership # \_\_\_\_\_ IEIN # \_\_\_\_\_

Name/Position: \_\_\_\_\_

Email: \_\_\_\_\_

IL ASCD Membership # \_\_\_\_\_ IEIN # \_\_\_\_\_

**If you need to add more names, please duplicate this registration form.**

IL ASCD Member	1 Person Each	2 People Each	3 People Each	Full-Time Student/ Retiree
___\$150	___\$199*	___ \$179**	___\$169**	___\$99.

\* Includes IL ASCD  
Membership

\*\* 2 or more attendees from the same school district/organization.  
Does not include membership.  
(Call for info on larger team discounts 618-203-3993)

Conference Fees: \$ \_\_\_\_\_

IL ASCD 1 year Membership Fee (add \$49) \$ \_\_\_\_\_

Total Registration Fees \$ \_\_\_\_\_

**Registration deadline is August 23, 2021**. A \$15.00 fee will be charged for cancellations made in writing prior to the deadline. No refunds will be given after the deadline. Confirmation will be sent via e-mail after your registration is processed. Registrations can be transferred to another individual by faxing information to 309-438-5364 or by emailing dscowde@ilstu.edu

### Payment Information:

(Payment or purchase orders MUST accompany registration form)

\_\_\_\_Check made payable to Illinois State University enclosed

\_\_\_\_Purchase order ENCLOSED. Purchase order #: \_\_\_\_\_

\_\_\_\_Charge Credit Card: \_\_Master Card \_\_Visa \_\_ Am/Ex \_\_Discover  
Account Number \_\_\_\_\_

Expiration: (Month/Year MM/YY) \_\_\_\_\_ and 3 Digit CVV code \_\_\_\_\_

Name on Card \_\_\_\_\_

**Illinois ASCD is a CPS  
Approved Provider: #24595**

### How to register:

**Online:** Use your Visa, MasterCard, Discover, or American Express card at [www.Illinoisascd.org](http://www.Illinoisascd.org)

**Call:** 800-877-1478 or 309-438-2160,

Mon. - Fri. 8:00 a.m. - 4:30 p.m. and use your Visa, MasterCard, Discover, or American Express.

**Mail:** Send completed form with check or copy of PO to: **IL ASCD Jane Felling Grades.K-2**— Illinois State University, Conference Services, Campus Box 8610, Normal, IL 61790-8610.

**Fax:** Fax completed form to 309-438-5364 using your Visa, MasterCard, Discover, or American Express or a copy of school P.O.