



Social-Emotional Learning Summit

2020 Social-Emotional Learning Summit

July 29-30, 2020

8:30am-3:30pm

Roosevelt University- Downtown Chicago Campus

Registration includes: 6 Professional Development Hours per day and Continental Breakfast

Join national, regional and local practitioners in over 50 breakout sessions to learn how students are gaining skills to understand and manage their emotions in the learning space. Latest research, practical classroom applications and overarching philosophies will take learning leaders to the next level in SEL implementation.

Keynote, July 29- Dwayne Reed: The Educator You Need



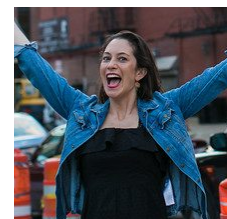
The first step in being the educator your scholars need is to build relationships with them! Teaching phenom and relationship-building expert, Mr. Reed, will inspire your teachers in the art of Maslow before Bloom, which means getting kids to know you care before they care about what you know. Each participant will take away dozens of practical, relationship-building skills and strategies which can immediately be implemented in their classroom. Teacher-leaders will also benefit from the lessons learned in this session!

Keynote, July 30-Maurice Swinney: Tough Conversations with Stakeholders



Maurice will lead engaging panelists from across the country as they share their differing perspectives on problems of practice with SEL and mindfulness implementation. What works? What doesn't? What does successful implementation look like for our most vulnerable learners and how can we be real in our journey to meet our students (and teachers!) where they are?

Speakers include: Carla Tantillo Philibert, Lara Veon, Roy K. Dobbs, Neil Gupta and 50 other National and Local Experts





Pre-Conference Options:

Date: Tuesday July 28, 2020

Time: 12:30-3:30 pm

Price: \$150/person (see page 3 for registration)



All Pre-Conference attendees receive a copy of Carla's book *Everyday Self-Care for Educators*, a yoga mat and tote bag!

Pre-Conference: A

Taking Care of YOU: Well-Being for Today's Administrators with Carla Tantillo Philibert and Paul Liabenow

Superintendents, principals, district leaders and administrators are invited to join Carla Tantillo Philibert and colleagues to explore the importance of well-being for our district and school leaders. This safe space will provide a place for participants to connect openly and honestly with other educational leaders across the country about the challenges and opportunities of holding a leadership role, and the necessity of finding time for self-care in a culture of self-sacrifice. For those participants who are interested in continuing this critical work, an optional professional learning community course with Roosevelt University will follow during the 2020-2021 school year (additional credit hours are available).

Pre-Conference: B

Taking Care of YOU: Self-care for Today's Educators with Lara Veon, Stefanie Piatkiewicz and Erika Haaland

Teachers, counselors, social workers, paraprofessionals and auxiliary staff are invited to join the Mindful Practices team to connect and share methods for combating the negative impacts of compassion fatigue and secondary trauma. Participants will learn and experience various movement, yoga and mindfulness techniques to help manage the stress that comes with supporting students, yourself, and your colleagues throughout the school year. An optional professional learning community with Roosevelt University will follow during the 2020 - 2021 school year, for those participants who are interested in continuing this work for additional credit hours.

We kindly ask all participants to dress casually and bring a water bottle. (Leave suits and business cards at home.)

After Lunch and Learn Mini Sessions

Are you hungry for more hands-on activities? Cut your 1.5 hour lunch short and sign up for a complementary 35 minute after lunch and learn mini-session! The following options are available on July 29th AND July 30th from **12:15-12:50**: Mindfulness, Cornhole, Yoga Level 1 (restorative), Yoga Level 2 (high energy) Basketball, Self-Care, Dance, Meditation, Legos/maker space and Art Therapy. **We would like participants to grab lunch beforehand, not bring lunch into the classroom.**

Sign up on page 3. [Visit Illinoisascd.org](http://Illinoisascd.org) for full details

Social-Emotional Learning Summit
July 29-30, 2020
Roosevelt University, 430 S Michigan Ave, Chicago, IL 60605

Organization/School _____



Address: _____ City: _____

State: _____ Zip: _____ Phone: _____ Fax: _____

Name/Position: _____

Email: _____

IL ASCD Membership # _____ IEIN # _____

Early Bird (Til 5/1/20)	IL ASCD Member	1 Person Each	2 People Each	3 People or more Each
____\$299(Two day)	____\$350#(Two day)	____\$399*(Two day)	____\$360** (Two day)	____\$350**(Two day)
____\$150(One day)	____\$175#(One day)	____\$224*(One day)	____\$180** (One day)	____\$175** (One day)

Cooperating Partners: IL ASCD,
TASB, MAMSE, MEMSPA, NHAESP and PLAEA

*Includes IL ASCD Membership

** 2 or more attendees from the same School/Organization does not
include membership.

I will Attend _____ July 29 _____ July 30 _____ Both Days

Conference Fees: \$ _____

IL ASCD 1 year Membership Fee (add \$49) \$ _____

July 28, Pre-Conference (add \$150) \$ _____ I will Attend Pre-Con A _____ Pre-Con B _____

After Lunch and Learn (optional) Yoga 1 _____ Yoga 2 _____ Mindfulness _____ Corn hole _____ Self-Care _____ Maker Space _____
Art Therapy _____ Dance _____ Basketball _____ Meditation _____

What After Lunch and Learn do you want to attend? July 29, Session _____ July 30, Session _____

Total Registration Fees \$ _____

Registration deadline is July 14, 2020 . A \$15.00 fee will be charged for cancellations made in writing prior to the deadline. No refunds
will be given after the deadline. Confirmation will be sent via e-mail after your registration is processed. Registrations can be transferred
to another individual by faxing information to 309-438-5364 or by emailing dscowde@ilstu.edu

Payment Information:

(Payment or purchase orders MUST accompany registration form)

____ Check made payable to Illinois State University enclosed

____ Purchase order ENCLOSED. Purchase order #: _____

____ Charge Credit Card: __Master Card __Visa __ Am/Ex __Discover

Account Number _____

Expiration: (Month/Year MM/YY) _____ and _____ 3 Digit CVV code _____

Name on Card _____

HOW TO REGISTER

Online: Use your Visa, MasterCard, Discover, or American
Express card at www.Illinoisascd.org

Call: 800-877-1478 or 309-438-2160,
Mon. - Fri. 8:00 a.m. - 4:30 p.m. and use your Visa,
MasterCard, Discover, or American Express.

Mail: Send completed form with check or copy of PO to:
IL ASCD SEL — Illinois State University, Conference
Services, Campus Box 8610, Normal, IL 61790-8610.

Fax: Fax completed form to 309-438-5364
using your Visa, MasterCard, Discover, or
American Express or a copy of school P.O